



The **GLOBE**™

International

Study Abroad | VISA | IMMIGRATION



IELTS

INTERNATIONAL ENGLISH
LANGUAGE TESTING SYSTEM



**STUDY, WORK & IMMIGRATE IN
CANADA | USA | UK**

TABLE OF CONTENTS

SR. NO	CONTENTS	PAGE
1	INTRODUCTION TO IELTS	3
2	CLASSROOM PROGRAM OVERVIEW	4
3	CLASSROOM PROGRAM - ACHIEVERS' BATCH	5-6
4	CLASSROOM PROGRAM - SUPER FAST CRASH COURSE	7
5	CLASSROOM PROGRAM - SUNDAY BATCH	8
6	CLASSROOM PROGRAM - GRAMMAR FOR IELTS & MASTER CLASS FOR TEST-TAKERS	9
7	CLASSROOM PROGRAM - IELTS ACADEMIC RE-TAKERS' BATCH	10
8	ONLINE PROGRAM - ABOUT ONLINE LEARNING	11
9	ONLINE PROGRAM - IELTS ACADEMIC BATCHES	12
10	SPOKEN ENGLISH	13
11	WHY IS SCORING HIGHER BANDS IMPORTANT?	14
12	TOP GLOBAL STUDY DESTINATIONS - KEY FACTS	15
13	IELTS PREPARATION BOOKS	16

INTRODUCTION

TO IELTS

The **International English Language Testing System (IELTS)** is the world's most popular English language proficiency test for higher education and global migration, with over **40 lakh tests** taken in 2021. IELTS lets you select the best colleges, universities and academic programs globally. A higher IELTS score increases your chances of obtaining the visa tremendously.

The test has been developed by some of the world's leading language assessment experts and tests the full range of English skills needed for success in your intended academics or new job abroad. The test score is valid for 2 years from the date of the test.



WHY SHOULD YOU TAKE IELTS?

- Improve English communication skill
- IELTS is accepted in more than 140 countries
- Get admission in more than 11,000 colleges and universities worldwide
- The result is highly accurate in gauging English proficiency
- If you wish to travel the world, IELTS can bring you closer to your goal
- Better chances of securing a job in home country after studying abroad

IELTS EXAM PATTERN

LISTENING	30 MINS	4 SECTIONS	40 QUESTIONS
READING	60 MINS	3 PASSAGES	40 QUESTIONS
WRITING	60 MINS	2 TASKS	TASK 1 - 150 WORDS; 20 MINS TASK 2 - 250 WORDS; 40 MINS
SPEAKING	11-14 MINS	3 PARTS	3 PARTS

IELTS Exam Fee: **INR 16,250** (As of April 2023)

Exam Conducted By: **IDP India**

Exam Modes: **Pen-Paper & Computer-Delivered**


Exam Modules: **Academic (For academic purposes) & General Training (For immigration)**


Test Dates: **4 times a month (Pen-Paper) | Up to 3 times a day, 7 days a week (Computer-Delivered)**

PROGRAM OVERVIEW

FEATURES	ACHIEVERS' BATCH	RE-TAKERS' BATCH	SUNDAY BATCH
Curriculum	18 Weeks	8 Weeks	16 Weeks
IELTS Batch Duration	Upto 270 Hrs	80 Hrs	96 Hrs
Hours Per Day	Minimum 3 Hrs Upto 6 Hrs	2	6
No. of Skills Taught Per Day (LRWS)	Upto 2	1	4
Online Live Classes	YES	YES	YES
Login With 40 Sectional Tests & 10 Mock Tests	YES	YES	YES
Books	7	7	7
Laptop Bag	YES	NO	YES
Complimentary Grammar & Spoken English Batch (Online & Offline)	YES	YES	(WEEK DAYS)
Assistant Trainer	YES	YES	YES
Dedicated Case Advisor	YES	YES	YES
Dedicated Relationship Manager for Test Preparation	YES	YES	YES
Dedicated Relationship Manager for Visa	YES	YES	YES
One to One Speaking Sessions (After IELTS Date Booking)	YES	YES	YES
One Writing Test Every Week	YES	YES	YES
Performance Analysis	YES	YES	YES
French Basic Course	YES	YES	YES
Paper Delivered Full Length Mock Tests (FLTs)	12	8	12
Master Session with Expert Faculty	YES	YES	YES
Fee (Inc. GST)			

ACHIEVERS' BATCH

 Achievers' batch is designed to aid the students' learning goals so as to help them **achieve desired band scores in IELTS.**

 This unique batch offers specialized pedagogy where you have the flexibility to attend a batch of a minimum of 3 hours up to 6 hours. Students get to strengthen their weak modules by following our Module-specific skill batches.

 The **12 Full Length Mock Tests** will enhance your **time management** skills and **intensify accuracy** as you enroll and practice with **The Globe International.**



"Choose the batch timing at your ease and convenience and attend upto 2 modules per day to speed up your progress."

MORNING BATCH

TIMINGS	MONDAY	TUESDAY	WEDNESDAY	THURSDAY	FRIDAY
	Reading	Listening	Writing Task 1	Writing Task 2	Speaking
	Speaking	Writing Task 2	Listening	Reading	Writing Task 1

EVENING BATCH

TIMINGS	MONDAY	TUESDAY	WEDNESDAY	THURSDAY	FRIDAY
	Reading	Listening	Writing Task 1	Writing Task 2	Speaking
	Speaking	Writing Task 2	Listening	Reading	Writing Task 1

ACHIEVERS' BATCH

WHO SHOULD JOIN?

- Suitable for those who need **flexible schedules for IELTS preparation**
- Suitable for those **who are occupied with other academic activities**
- Suitable for **Grade 10 or 12 students** for ease of batch timing
- Suitable for those who need to know the **Do's and Dont's of IELTS** for a high score
- Suitable for students of **CBSE, ICSE, and State boards**

KEY FEATURES

- Provision of **Sr. Trainer & Assistant Trainer**
- **Rolling Batches** - Flexibility for the students to attend the batches as per their convenience
- Students can attend **1 module, 2 modules daily** for practice along with thorough review, strategies and tips for improved scores
- **Weekly mock tests**
- **Test evaluation** with predicted scores
- **Books provided by us - Score More Series - 7 Books**
- **Skill building exercises** will be provided at regular intervals for **overall language improvement**
- **Integration of teaching** through our **E-learning portal** every week for **blended learning** experience

FEES: ₹ _____ (Incl. GST)

SUPER FAST CRASH COURSE

INTRODUCING SUPER FAST CRASH COURSE BATCHES



These **ultra crash course batches** at our institute are designed to offer the **experience and benefits of Personalized Premium** batch to the students who are **already availing coaching services across any batch at The Globe International** or who wish to join these batches, especially for **real quick learning**.



The **curriculum of Super Fast Crash Course batches** is designed in a manner that it can be delivered at **real brisk pace**. In fact, the **curriculum** in these batches is designed to be **delivered in a few hours!**



The **Super Fast Crash Course** batch is offered for: **IELTS (A/GT), PTE, SAT & GRE**.

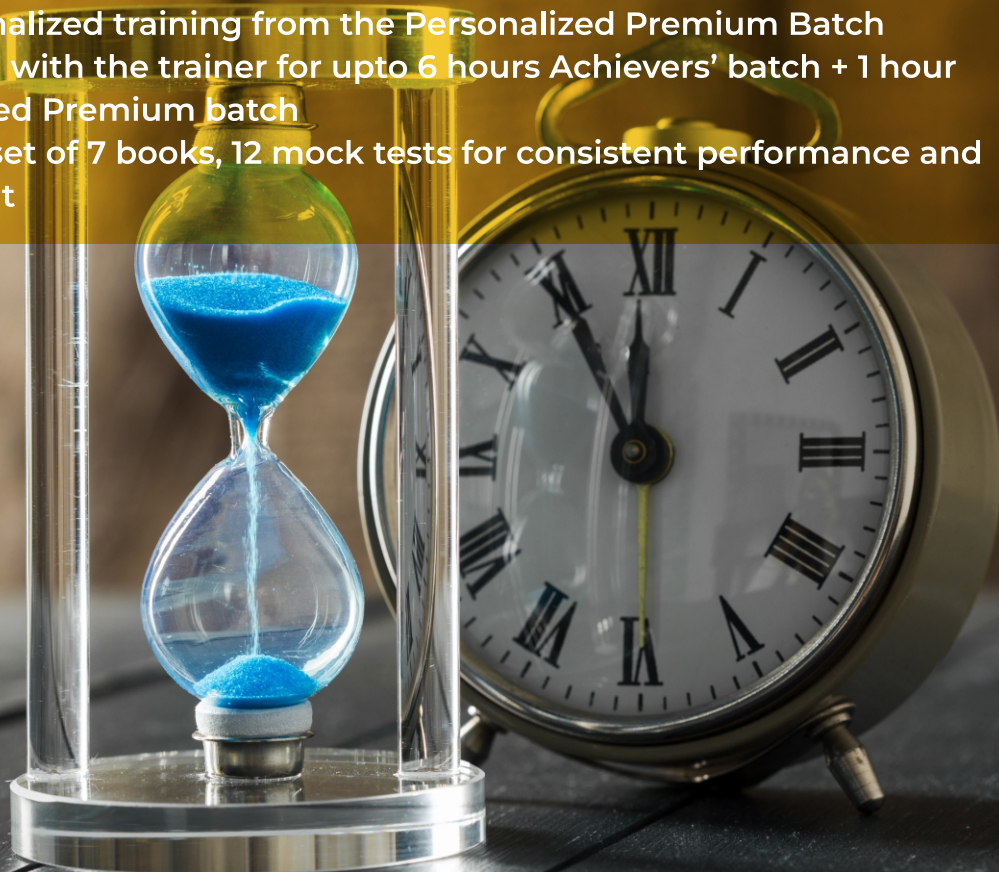
FEES: ₹ _____ (Incl. GST)

WHO SHOULD JOIN?

- Students who are running really short on preparation time
- Students who plan to apply for the next academic intake
- Students who have sound understanding of the exam format, but require assistance with the basics and evaluation

KEY FEATURES

- Avail dual training from the Achievers' batch, covering up to 2 modules a day, and personalized training from the Personalized Premium Batch
- Interaction with the trainer for upto 6 hours Achievers' batch + 1 hour Personalized Premium batch
- Receive a set of 7 books, 12 mock tests for consistent performance and assessment



SUNDAY BATCH



The Sunday batch is designed especially for the students **who cannot attend the classes during weekdays.**



These **6-hour intensive batches**, covering all **4 modules every Sunday**, ensure that students cope with the preparation **even by attending lectures once a week.**

WHO SHOULD JOIN?

FEES: ₹ _____ (Incl. GST)

- Suitable for **full-time job holders**
- Suitable for **students living away from the main city**
- Suitable for any candidate **who has a fixed weekly schedule**
- Suitable for candidates **occupied with academics** for rest of the week
- Suitable for **home-makers** willing to excel in English communication skills

KEY FEATURES

- **16-Week curriculum** ➤ **A set of 7 books**
- **Six-hour class.** Each one and half hour is dedicated to **one module**
- **Fresher's batch every Saturday**
- **Detailed tips of solving each question type** across **Listening and Reading** modules
- **10 mock tests (Every Sunday)**
- **Detailed discussion** on how to develop **Writing and Speaking** skills
- **Writing assessment** every week ➤ Access to **our E-learning Portal**



GRAMMAR FOR IELTS (Foundation Batch)



This is a **multi-skills course** that smoothly takes the journey of learning English from **intermediate to advanced level in an effective manner**.



The real-world content will encourage students to remain engaged and motivated throughout the learning process. It will help students to communicate with **better fluency and accuracy**.



This course incorporates **advanced grammar, vocabulary, academic writing, listening and reading comprehension** topics, proving to be an ideal course for the study abroad aspirants.

WHO SHOULD JOIN?

- Suitable for the students planning to move abroad and **improve English language skills**
- Suitable for students from the **regional mediums of schooling**
- Suitable for students who want to **master the basics of English language and Grammatical concepts**
- Suitable for students who want a **grip on functional English** before IELTS preparation

KEY FEATURES

- **12-Week Curriculum**
- **90 Minutes' Classroom Time**
- **5 Days a Week Class**
- **Tutor Help Desk**
- **6-Month Validity**

MASTER CLASS FOR TEST-TAKERS



For the candidates who have booked their IELTS date, we provide a special **2-hour Master Class**, where they get a chance to interact with our Master Trainers!


WHO SHOULD JOIN?

- For the candidates who have **booked their IELTS test date**, we have a **special 2-hour Master Class Batch**
- Student who intend to receive **specialized attention** of the faculties **just before the exams**
- Students who **do not want to attend regular batches & focus only on exam-oriented teaching**, related **tips & strategies** and get the **doubts solved**


KEY FEATURES

- Candidates will get the chance to attempt individual tests with time management and review which is important while appearing the actual test
- Candidates will get a chance to **interact with expert faculty ahead of their test**
- The faculty will provide **last-minute tips** and **clear doubts**, if any, so that the students **attempt the test successfully** without any preconceived mind-set
- The sessions will be conducted in **small batches** for **maximum interaction**

RE-TAKERS' BATCH

 Students who are **unable to achieve the desired scores in their first attempt** in the IELTS exam, can now **prepare for IELTS test again** and secure the desired scores with flying colours!

 **Specialized Re-takers' batch** focuses on the **individual modules** in which students face difficulties. Clubbed with **thorough practice**, we provide **one-to-one doubt solving** along with requisite **tips, tricks, and strategies** across all modules.

 Our **motivational approach** helps students in **knowing their potential** before attempting the test.

If your college admission and visa application are processed with us, and if you have taken IELTS at least once, **you can join the Re-takers' Batch**

FREE!!*

WHO SHOULD JOIN?

Students who need help with a particular module, should join the **RE-TAKERS' BATCH** and get the guidance they need at their pace.

- Suitable for students taking **multiple attempts** of the test
- Suitable for students struggling for scores **in spite of intensive training at other institutes**
- Suitable for candidates **who must retake the test to manage the admission in current intake**

**Terms & Conditions Apply*

KEY FEATURES

- **8-Week** curriculum
- **2 hours/day**
- **Skilled and expert** faculty
- **Doubt-solving** sessions
- **Strategic mentoring** with simple methodologies
- **Full-length tests** and writing tests to gauge the **level of preparation**
- **Computer - Delivered test (Every Saturday)**
- **Pen - Paper test (Every Thursday)**
- In-depth **analysis** and **solutions** of modules that need focus
- **Confidence building** with **intense practice** of all modules with specialized **'Score More'** books

FEES: ₹ _____ (Incl. GST)

ABOUT ONLINE LEARNING

We are assisting the students with authentic and seamless Live and Self-Paced (Video) courses for **IELTS (Academic & General), TOEFL-iBT, Duolingo English Test, PTE, SAT, GRE, GMAT, and languages (English, French and German)** with corresponding mock tests and practice tests.

EDGE FOR THE STUDENTS

REALISTIC TESTS - RIGHT ON YOUR COMPUTER

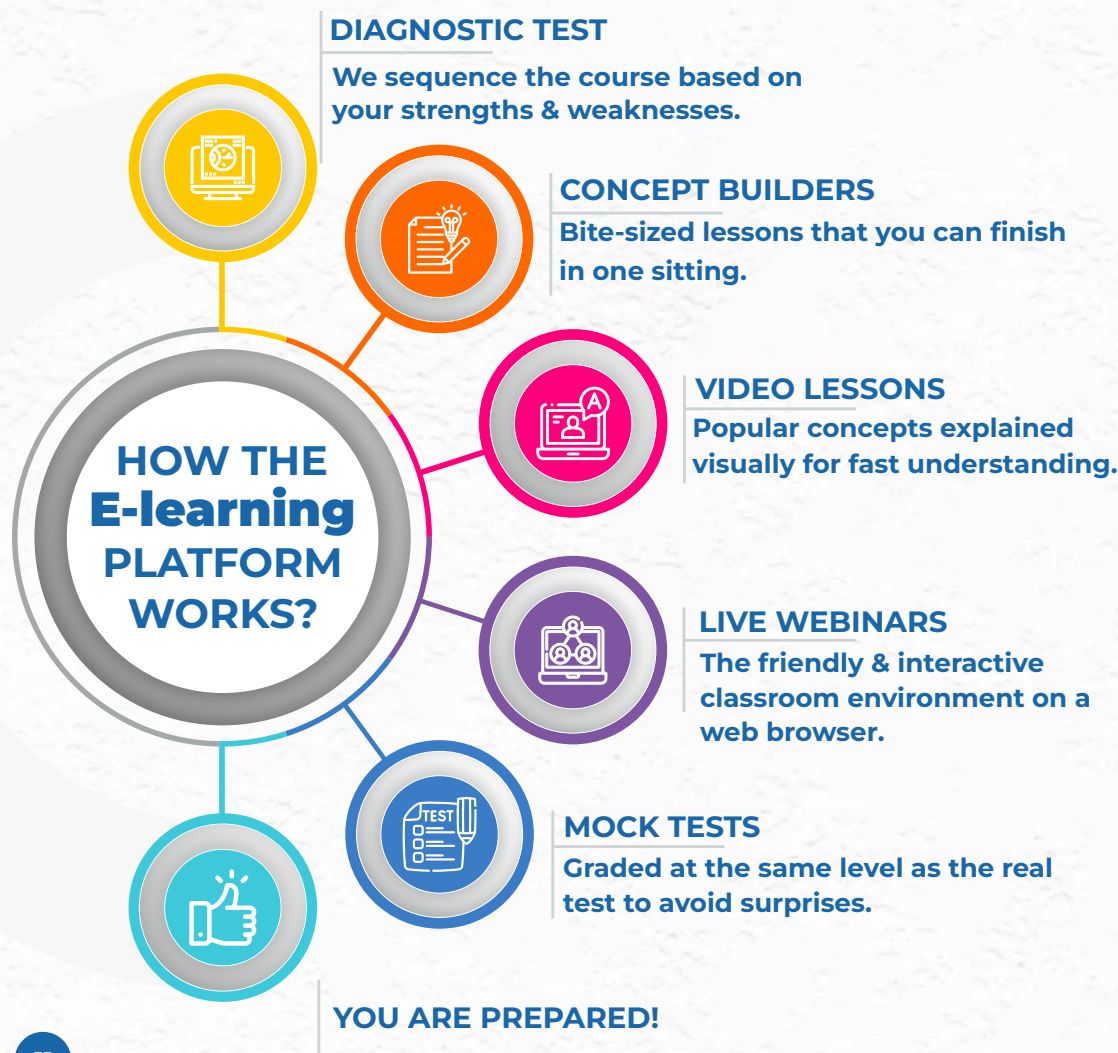
When the exam conditions are new, it can invariably become stressful. Our simulated test environment makes everything familiar and helps students score more.

INDISTINGUISHABLE CONTENT

Our mock tests (and course material) match the difficulty level of the real test. By augmenting their skills to the required level, students will know what to expect at the exam center.

SUPPORT AT EVERY STEP

Students can accelerate their learning through webinars and through online doubt solving in live lectures.



LEARN ANYWHERE



LEARN AT YOUR OWN PACE



LEARN ANYTIME



LEARN VIA LIVE CLASSES



KEEP MAKING PROGRESS MINUTE BY MINUTE

IELTS ACADEMIC BATCHES

FEATURE	ACADEMIC REGULAR	ACADEMIC RAPID	ACADEMIC TEST PACKAGE
English Assessment Test	YES	YES	YES
Lessons for Beginners (LRWS)	YES	YES	YES
Untimed Sectional Tests	40	40	40
Timed Mock Tests	10	10	10
Vocab, Grammar, IELTS Tips' Videos	300+	300+	300+
Videos on Mis-spelt Words & How to Remember Them Correctly	YES	YES	YES
LIVE Lectures Duration	60-90 MIN/DAY	120 MIN/DAY	NA
Validity	360 DAYS	180/90DAYS	90 DAYS
Live Lecture Curriculum	12 WEEKS	6 WEEKS	NA
Modules Per Day	1	2	NA
Instant Results for Listening & Reading Tests	YES	YES	YES
Writing & Speaking Results by Expert Mentors	YES	YES	YES
Books (IELTS Academic LIVE Class Lessons)	E-BOOK	E-BOOK	NA
5 Days' Foundation Batch	YES	YES	NA

IELTS ACADEMIC REGULAR TIMINGS (Monday to Friday)

09:15 AM - 11:15 AM (English-Hindi)
03:30 PM - 05:30 PM (English-Hindi)
01:00 PM - 03:00 PM (Only in English)
07:30 PM - 09:30 PM (Only in English)

SATURDAY DOUBT SOLVING / SPEAKING SESSIONS

09:15 AM - 10:45 AM (IELTS Regular)
01:00 PM - 02:30 PM (IELTS Regular)

IELTS ACADEMIC RAPID TIMINGS (Monday to Friday) (Only in English)

07:30 AM - 09:30 AM | 10:00 AM - 12:00 PM
03:00 PM - 05:00 PM | 06:00 PM - 08:00 PM
08:45 PM - 10:45 PM

SATURDAY DOUBT SOLVING / SPEAKING SESSIONS

07:30 AM - 09:00 AM
06:00 PM - 07:30 PM

SPOKEN ENGLISH

A Course With Cambridge Certification

The **Spoken English program** at our institute is a sincere attempt towards **widening the horizons** beyond the existing academic courses to reach out to the categories of potential learners in addition to current students. It is an effort to **upskill aspirants** who wish to **improve their English communication skills** and targets the audience requirement from varied **age groups, professionals, and homemakers**. The **three-month (12 weeks)** course comprising **Grammar, Phonetics, Functional English (Speaking Skill, Listening Skill, Reading Skill, Writing Skill), Storytelling, & Personality Development** is designed to help students **achieve their ultimate goal** of **bettering spoken and written** English language.

COURSE FEATURES

LEVEL - 1
A1-A2 BASIC

LEVEL - 2
INTERMEDIATE
B1

LEVEL - 3
ADVANCED
B2

- ◉ GRAMMAR
- ◉ PPT
- ◉ STUDENT BOOK
- ◉ ACTIVITIES
- ◉ MOVIES
- ◉ VOCABULARY
- ◉ TESTS
- ◉ STORYTELLING
- ◉ PERSONALITY DEVELOPMENT
- ◉ PHONICS
- ◉ HOMEWORK

FUNCTIONAL ENGLISH
LISTENING | READING | WRITING | SPEAKING

**GET EQUIPPED WITH
PROFESSIONAL SKILLS
TO SCALE UP YOUR CAREER!**

**ADD ON FEATURES OF
OUR B1 AND B2 COURSES**

- CV AND RESUME WRITING
- PROFESSIONAL EMAIL WRITING
- HOW TO SEARCH AND APPLY FOR JOBS
- PUBLIC SPEAKING

**- 3 MONTHS' CURRICULUM
- 6 MONTHS' VALIDITY**

FEES: ₹ _____ (Incl. GST)



WHY IS SCORING HIGHER BANDS IMPORTANT?

CANADA

- A higher band score in IELTS helps you in fulfilling the Student Direct Stream (SDS) visa criterion
- Get a chance to apply in top-ranking Government universities and colleges
- A higher band score also helps in securing scholarship at some top colleges & universities
- Securing a higher band score also opens the gateway to Permanent Residence

USA

- Admission in top-ranking universities, including 'Ivy League' universities
- Facing the student visa interview becomes easier
- Chances of receiving a scholarship in the top universities increase tremendously

UK

- Chances of getting admission into top management and engineering universities
- A proven English language proficiency in the form of IELTS helps in part-time and full-time employment in the UK
- Mandatory requirement of IELTS score for the individuals applying to settle permanently in the UK (Leave to Remain/Long Residence)

AUSTRALIA

- With 6.5 bands or higher, you are not required to appear for the additional ELICOS program
- With this, you can save up to \$5,000 AUD per semester
- Top Australian universities require at least 6.5 bands for admission
- Provides an excellent pathway for top career options and Permanent Residence

NEW ZEALAND

- Direct entry into Level 8 program. This saves you the cost of an additional year of education
- With the entry into Level 8 program, your spouse becomes eligible to receive direct work permit visa and your kids become eligible to receive free schooling
- Negligible chances of student visa interview

GERMANY

- With 6.5 to 7.0 bands or higher, you become eligible to receive a Full Tuition Fee Waiver
- It also increases your chances of getting admission into Top 50 German universities
- A higher band score significantly increases the choice of programs, universities & scholarships

OTHER EUROPEAN COUNTRIES

Top universities in most of the European countries such as Norway, Finland, France, Germany, Netherlands, Spain, Belgium, Austria & Estonia accept IELTS scores in the range of 6.0 bands to 7.0 bands for undergraduate and graduate level courses.

HEALTHCARE SECTOR

- Healthcare is a highly regulated sector in countries such as Canada, USA, UK, Australia, New Zealand, etc.
- Programs related to Medicine, Pharmacy, Nursing, Physiotherapy, Dentistry, etc. require 7.0 bands or higher for university/college admissions and the clearance of licensed exams

TOP GLOBAL STUDY DESTINATIONS: KEY FACTS

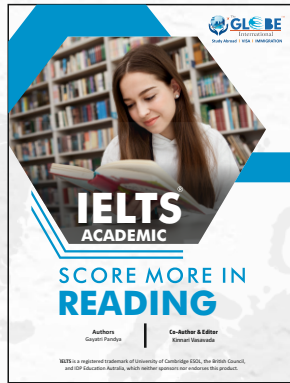


FEATURES	STUDY IN CANADA	STUDY IN USA	STUDY IN UK
AVG. IELTS / PTE REQUIREMENT	I: 6.5 Overall P: 58 Overall	I: 6.5 Overall P: 57 Overall	I: 6.5 Overall P: 60 Overall
AVG. SAT / GRE REQUIREMENT	S: 1150 G: 300-320+	S:1051 G: 320+	S: 1290-1380 G: Not req.
TYPES OF INSTITUTIONS	Govt. colleges & uni.	Universities (Public, Pvt, Ivy League), community colleges	Universities & colleges
PROGRAM CATEGORIES	Diploma, Adv. Diploma, PG Diploma, Bachelor, Master	Bachelor, Master, Associate Degree, Ph.D.	Bachelor, Master
VISA INTERVIEW REQUIRED	Yes (In some cases since Nov 2022)	Yes	No (Mostly)
VISA APPROVAL	75%	85%	98%
APPROX. BUDGET (IN INR)	16 to 18 Lakh	20 to 25 Lakh	16 to 20 Lakh
SCHOLARSHIP	Yes	Yes	Yes
PART-TIME & FULL-TIME JOB OPPORTUNITIES	40 hrs/week	PT: 20 hrs/week (On-campus) FT: 40 hrs/week	PT: 20 hrs/week FT: 40 hrs/week
POST STUDY WORK PERMIT	3 years after minimum study of 2 years	12 or 36 months of OPT	2 years
PR OPTIONS	6 - 36 months (Depends on province)	27-36 months' OPT & H-1B filing	5 years of living & working in UK
PARENTS' VISITOR VISA	Yes	Yes	Yes
INTNL. STUDENTS (AS OF 2022)	621,000+	1 million+	605,000+
MAIN CITIES	Toronto, Montreal, Vancouver	New York, Los Angeles, Chicago	London, Birmingham, Leeds
AVG. TEMPERATURE	° 2.1 C	11.5°C	21.5 C

IELTS PREPARATION BOOKS



Score More in Listening



Score More in Reading



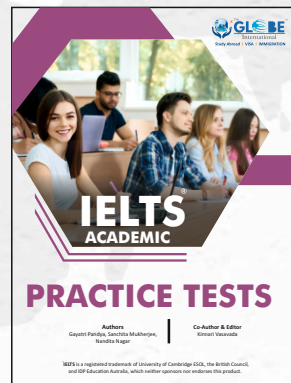
Score More in Writing



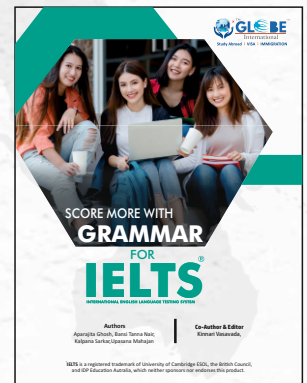
Score More in Speaking (Advanced)



Score More in Speaking (Beginner's)



Practice Tests



Score More with Grammar for IELTS



The **GLOBE** International TM

Study Abroad | VISA | IMMIGRATION

THE GLOBE INTERNATIONAL (RAJKOT)

**305 & 306, Krishna Corn Arch - 4, Opp. Sinhar School,
Nr HP Petrol Pump, University Road, Rajkot - 360005**

E: info@theglobeinternational.com Link: elearning.theglobeinternational.com

M: 8320108762/ 9537751387